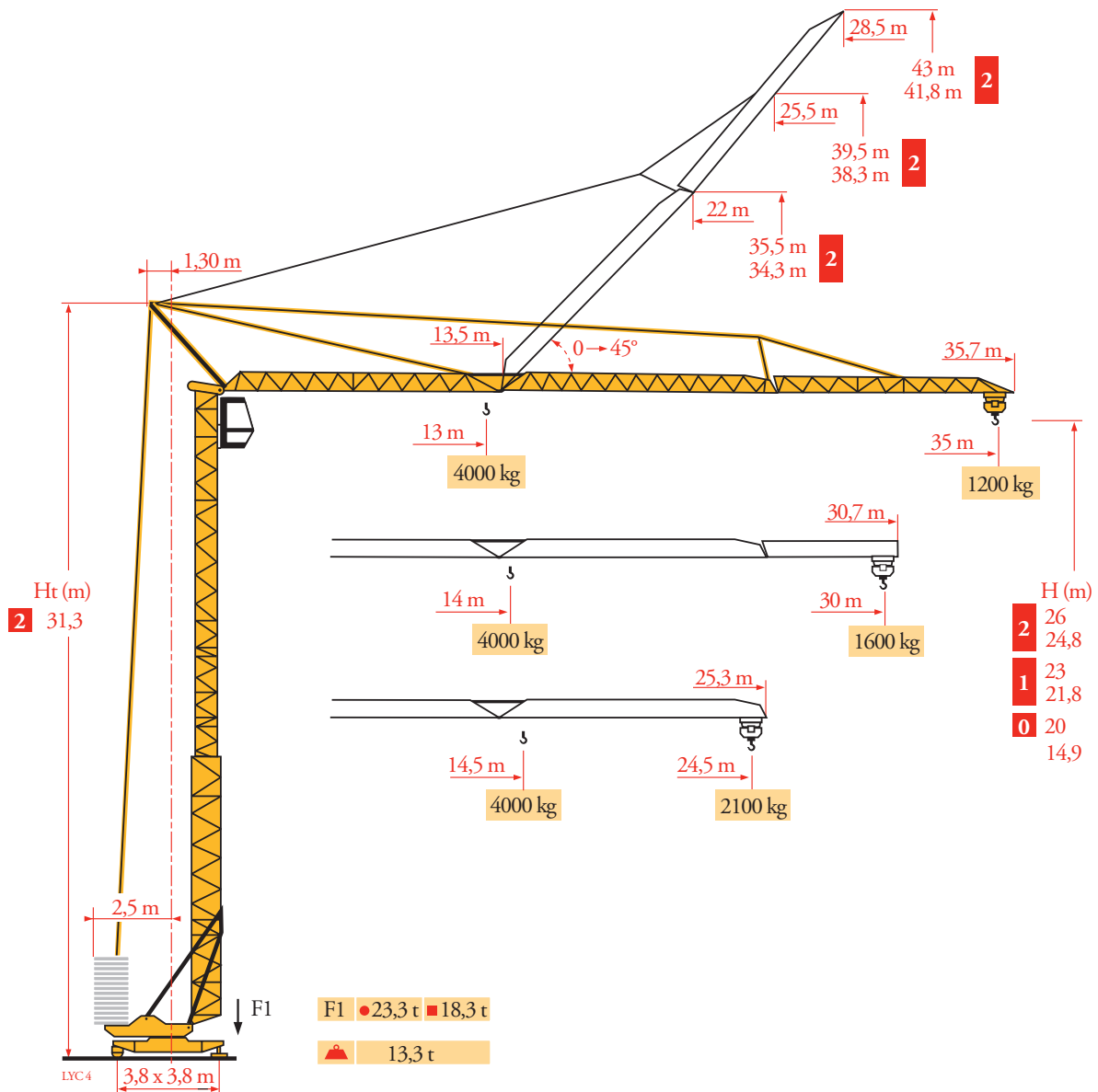
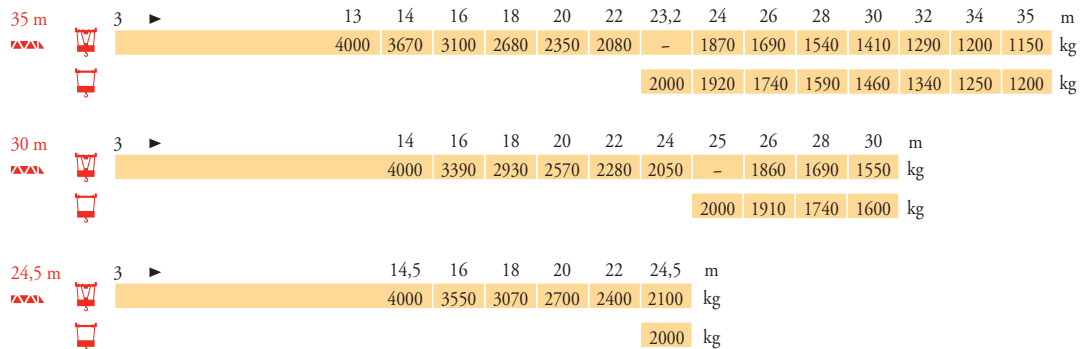


Potain GTMR 331C



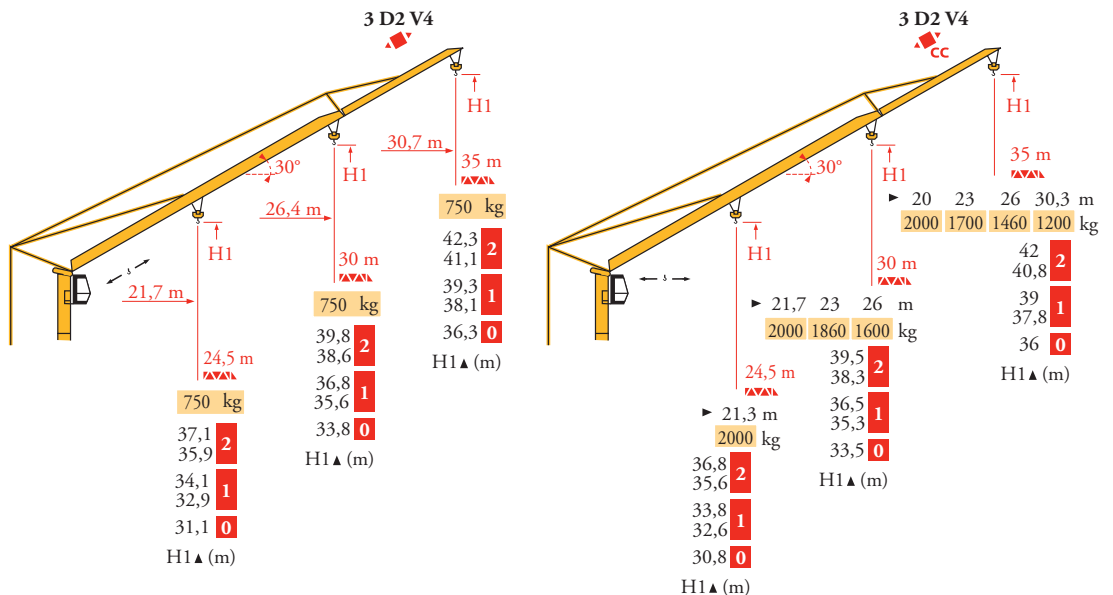
Courbes de charges
Lastkurven
Load diagrams
Curvas de cargas
Curve di carico
Curva de cargas
Диаграммы грузоподъемностей

LVC3



Flèche relevée
Ausleger in Steilstellung
Luffing jib
Flecha izada
Braccio impennato
Lança inclinada
Маховая стрела

LVC3



FR
Chariot distributeur
Chariot distributeur et courbes de charges
Réactions en service
Réactions hors service
A vide sans lest (ni train de transport) avec flèche et hauteur maximum.

DE
Verfahrbare Laufkatze
Verfahrbare Laufkatze und Lastkurven
Reaktionskräfte in Betrieb
Reaktionskräfte außer Betrieb
Ohne Last, Ballast (und Transportachse), mit Maximalausleger und Maximalhöhe.

EN
Traversing trolley
Traversing trolley and load diagrams
Reactions in service
Reactions out of service
Without load, ballast (or transport axes), with maximum jib and maximum height.

ES
Carro distribuidor
Carro distribuidor y curvas de cargas
Reacciones en servicio
Reacciones fuera de servicio
Sin carga, sin lastre, (ni tren de transporte), flecha y altura máxima.










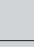




IT
Carrellino distributore
Carrellino distributore e curve di carico
Reazioni in servizio
Reazioni fuori servizio
A vuoto, senza zavorra (ne assali di trasporto) con braccio massimo e altezza massima.

PT
Carro distribuidor
Carro distribuidor e curva de cargas
Reações em serviço
Reações fora de serviço
Sem carga (nem trem de transporte)- sem lastro com lança e altura máximas.

RU
Грузовая тележка
Грузовая тележка и диаграммы грузоподъемностей
Реакции при работе
Реакции в покое
Вес без груза, балласта (или транспортных осей), с максимальной длиной стрелы и максимальной высотой.

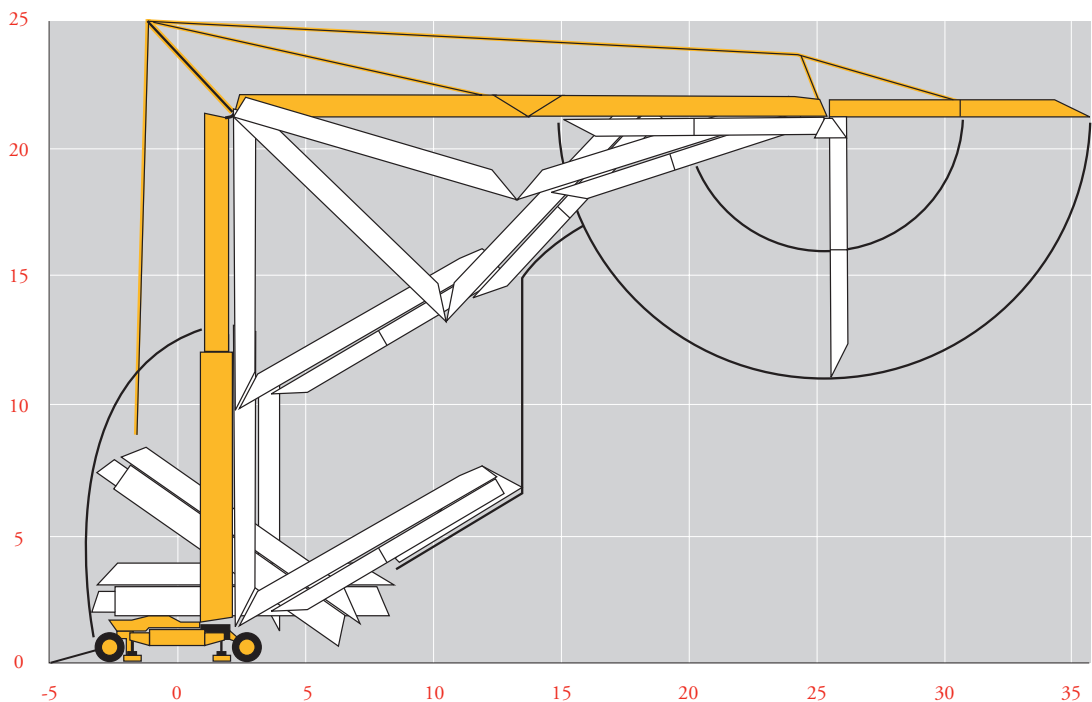
Mécanismes
Antriebe
Mechanisms
Mecanismos
Meccanismi
Mecanismos
Механизмы

LVC 4



									ch - PS hp	kW
										
	15 TDPC 10	m/min	8,3	25	50	4,15	12,5	25	15	11
		kg	2000	2000	1200	4000	4000	2400		
	20 LVF10	m/min	5	25	50	2,5	12,5	25	20	15
		kg	2000	2000	1300	4000	4000	2600		
	3 D2 V4	m/min	22 - 44						4	3
	RCV 22	tr/min U/min rpm	0 → 0,8						3	2,2
	TVD 122	m/min	25						2 x 2	2 x 1,5
CEI 38 			IEC 38			kVA				
400 V (+6% -10%) 50 Hz						15 TDPC 10 : 20 kVA 20 LVF 10 : 25 kVA				

Montage
Montage
Erection
Montaje
Montaggio
Montagem
Монтаж

LVC 3



FR

-  Levage
-  Distribution
-  Orientation
-  Translation

DE

- Heben
- Katzfahren
- Schwenken
- Kranfahren

EN

- Hoisting
- Trolleying
- Slewing
- Travelling

ES

- Elevación
- Distribución
- Orientación
- Traslación

IT

- Sollevamento
- Distribuzione
- Rotazione
- Traslazione

PT

- Elevação
- Distribuição
- Rotação
- Translação

RU

- Подъем
- Перемещение каретки
- Поворот
- Перемещение крана

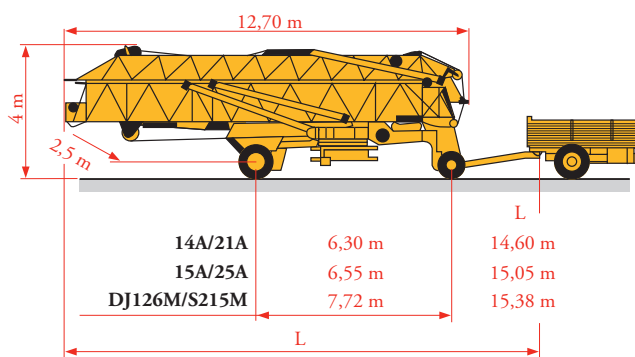
Transport
 Transport
 Transport
 Transporte
 Trasporto
 Transporte
 Транспортировка

LYC3

14A/21A

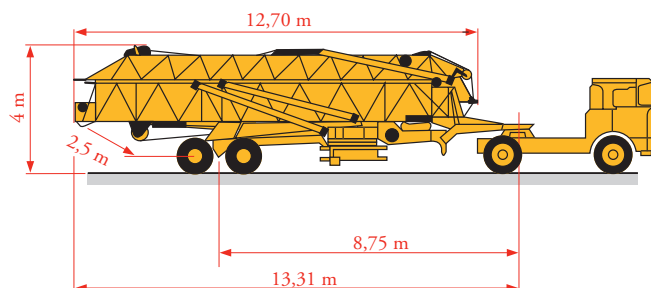
15A/25A

DJ126M/S215M



S4/S215M

S5B/J215M



Document commercial non contractuel. Pour toute information technique se référer à la notice correspondante.

Unverbindliches Vertriebsdokument. Für technische Informationen, siehe die entsprechenden Anweisungen.

This commercial document is not legally binding. For any technical information, please refer to the corresponding instructions.

Documento commercial no contractual. Para cualquier información técnica, ver la noticia correspondiente.

Documento commerciale non vincolante, per tutte le informazioni tecniche fare riferimento al catalogo istruzioni.

Documento comercial não contratual. Para qualquer informação técnica complementar consultar as respectivas instruções.

Этот коммерческий документ не является юридически обязательным. Для получения технической информации, см. соответствующие инструкции.



Manitowoc - Americas - World Headquarters
 2400 S. 44th Street • Manitowoc • WI 54220 USA
 Tel: +1 920 684 4410 • Fax: +1 920 652 9778

Manitowoc - Europe, Middle East & Africa
 Manitowoc France SAS
 18, rue de Charbonnières B.P. 173 • 69132 ECULLY Cedex • FRANCE
 Tel: +33 (0)4 72 18 20 20 • Fax: +33 (0)4 72 18 20 00

Manitowoc - Asia Pacific
 16F Xu Hui Yuan Building,
 1089 Zhongshan No.2 Road (S) • Shanghai 200030 China
 Tel: +86 21 6457 0066 • Fax: +86 21 6457 4955

GTMR 331C

REF. 2003 48 LYC 6